

**Great Pay and Benefits**



**2nd Shift Fabrication and Welders**

**\$4000 Sign on Bonus**  
**\$5000 relocation assistance if relocating from over 50 miles away**

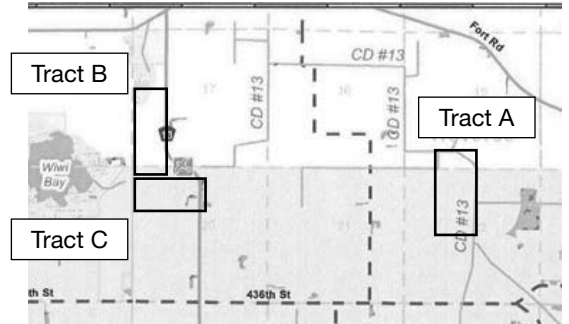
Wages starting at \$24.28(including Shift Diff) and higher based on experience. Wages at \$28.81 within two years! Weld Equipment, including helmets supplied by CNH. Benefits include uniform allowance, medical, dental, vision and more.

Apply online at [www.cnhindustrial.com](http://www.cnhindustrial.com) to join the CNH industrial team in Benson. Call 320-843-3333 with any questions.

**PUBLIC LAND AUCTION COMING SOON**

**Oshawa Township, Nicollet County, MN**

Tract A, ID#10.742.0010 +12.741.0010 undivided.  
 Tract B, ID#12.017.0500 +12.017.0510 undivided.  
 Tract C, ID#10.120.0100 +10.120.0120 undivided.



Tract A: Auctioneer Wingert & Hertz, 105/98 Ac. CPI 77 to 99, 83 avg. corn soybean rotation at County Drainage Ditch CD#13. T110, R27. Auctn-Q4'21

Tract B: 77/73Ac. CPI 86 to 99 avg. 93, corn soybean oat wheat alfalfa, T110 R27 SW Section 17, access Cty 13, Auctn-Q1'22

Tract C: 76/73Ac. CPI 81 to 99 avg. 92, corn soybean oat wheat alfalfa, T110 R27 NW Section 20, access Cty 13 Auctn-Q1'22

Centrally located for weather diversification near Glencoe, Shakopee, Mankato and New Ulm west of I35 and north of I90, and between highways 169, 19, 14, and 71. West of St. Peter, MN between 5 and 99 at County Rd 13. Bidder drive-by welcome. Green, contour, legacy, joint venture bids accepted. Bidder verify large equipment sprayer field access driveways and neighboring parcels.

Watch for more advertising regarding these upcoming public land auctions and bidder list contacts. See Farmers National Company for additional information.

Notice sponsored by Cain Family.

**More ads on next page>**



Steve Fields  
Minnesota Attorney

**INJURED AT WORK?  
DISABILITY DENIED?**

**Contact Us Today  
For Free Advice**

Workers' Compensation  
Long-Term Disability  
Social Security Disability



507-923-4169

[www.GetFields.com](http://www.GetFields.com)

**HAVE A SEAT!**



**Over 200  
Bar Stools/  
Counter Stools  
In Stock!**

**Family FUN CENTER**

507.282.7682  
familyfuncenter.com  
2207 7th St. NW Rochester, MN

Your newspaper has agreed to participate in the Minnesota Display Ad Network program by running these ads in the main news section of your newspaper (not the classified section of your newspaper). At times, advertisers may request a specific section. However, the decision is ultimately up to each newspaper. Ads may need to be decreased/increased slightly in size to fit your column sizes. Please do not bill for these ads. If you have questions, please call MNA at 800/279-2979. Thank you.





**VISIT  
CAMPUS**

- ▲ **NOVEMBER 5, 2021**  
Campus Visit Day
- ▲ **DECEMBER 15, 2021**  
Career Exploration Event
- ▲ **FEBRUARY 4, 2022**  
Campus Visit Day

**THE  
SMART  
WAY UP**

**S SOUTHEAST**  
Technical College

605-367-6040 | [admissions@southeasttech.edu](mailto:admissions@southeasttech.edu)  
[SOUTHEASTTECH.EDU/VISIT](http://SOUTHEASTTECH.EDU/VISIT)

Your newspaper has agreed to participate in the Minnesota Display Ad Network program by running these ads in the main news section of your newspaper (not the classified section of your newspaper). At times, advertisers may request a specific section. However, the decision is ultimately up to each newspaper. Ads may need to be decreased/increased slightly in size to fit your column sizes. Please do not bill for these ads. If you have questions, please call MNA at 800/279-2979. Thank you.

